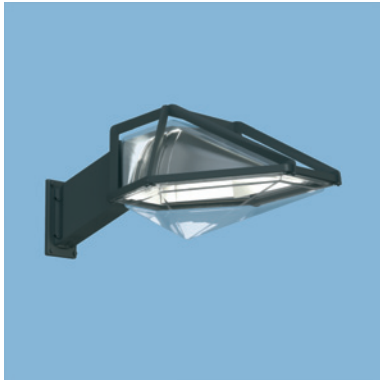


- MAIN ROADS
- CAR PARKS
- INDUSTRIAL AREAS
- COURTYARDS

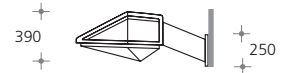
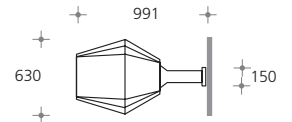


**POLYGON** Wall fitting with bracket.

Housing made of die-cast aluminium, aluminium, stainless steel, painted, stainless steel screws, stainless steel threaded inserts for regularly used fixing positions, two-part diffuser of clear PC, asymmetric high performance mirror optics, L: 695mm, B: 630mm, H: 397mm, protection category IP65, protection class I with option class II, standard colour: black [-2].

A<sub>w</sub>: 0,229 m<sup>2</sup>, weight: 21,5 kg

**Wall fitting** **SX 582** ■ ■ ■ including wall bracket



Mirror optics asymmetric

HSE	HIE
70W → 2 0 LVK → 7833	70W → 2 6 LVK → 7833
100W → 2 1 LVK → 7833	100W → 2 7 LVK → 7833

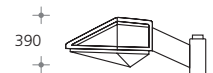
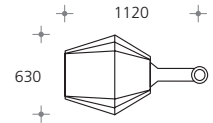


**POLYGON** Pole top fitting with bracket for pole top Ø: 90mm, for mounting on recommended poles.

Housing made of die-cast aluminium, aluminium, stainless steel, painted, stainless steel screws, stainless steel threaded inserts for regularly used fixing positions, two-part diffuser of clear PC, asymmetric high performance mirror optics, L: 695mm, B: 630mm, H: 397mm, protection category IP65, protection class I with option class II, standard colour: black [-2].

A<sub>w</sub>: 0,229 m<sup>2</sup>, weight: 21,5 kg

**Pole top fitting** **SX 580** ■ ■ ■ including bracket



Mirror optics asymmetric

HSE	HIE
70W → 2 0 LVK → 7833	70W → 2 6 LVK → 7833
100W → 2 1 LVK → 7833	100W → 2 7 LVK → 7833
150W → 2 2 LVK → 7833	150W → 2 8 LVK → 7833

Please complete reference no. with the relevant codes for optic, lamp and colour.

<b>Specification example:</b> 580 <span style="color: #00AEEF;">2 0</span> - <span style="color: #E91E63;">2</span>	<b>POLYGON</b> SX 580	<b>HSE 70W</b> 2 0	<b>black</b> - 2
--	--------------------------	-----------------------	---------------------

**Colour code:** → ■ black - 2, choice of colours - 9

**Recommended Poles**

Conical galvanised steel pole, painted, features extended buried base and anti-sink plate set, CE-approval according to EU construction-product regulations, supplied with IP 54 fuse box 2x5x16mm<sup>2</sup> for loop in-and-out.

H: 6000 / 1000mm	pole top Ø: 90mm	LPH: 6000mm	<b>SX 115 14-</b> <span style="color: #E91E63;">■</span>
H: 7000 / 1200mm	pole top Ø: 90mm	LPH: 7000mm	<b>SX 116 14-</b> <span style="color: #E91E63;">■</span>
H: 8000 / 1200mm	pole top Ø: 90mm	LPH: 8000mm	<b>SX 117 14-</b> <span style="color: #E91E63;">■</span>
H: 10000 / 1500mm	pole top Ø: 90mm	LPH: 10000mm	<b>SX 126 14-</b> <span style="color: #E91E63;">■</span>

